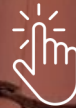




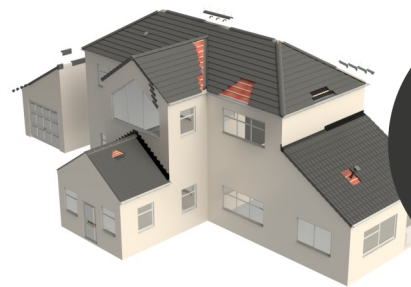
# Shire Pantile

## Product Technical Information Sheet

Material	Concrete
Minimum roof pitch	22.5° smoothfaced 30° sandfaced
Headlap (minimum)	75 mm
Headlap (maximum)	120 mm
Batten spacing at maximum gauge	305 mm
Batten spacing at minimum gauge	260 mm
Size of tile	380 x 230 mm
Covering capacity	16.4 tiles per m <sup>2</sup> 75mm headlap
Cover width	200 mm
Profile depth	70 mm
Hanging length	360 mm
Weight as laid	46.5 kg per m <sup>2</sup> at 75mm headlap
Weight per 1000 (including pallet & packaging)	2.88 tonnes
Weight per tile	2.83 kg
Weight per pallet (including pallet & packaging)	1.036 tonnes
Bond	Straight
Quantity per pallet	360
Battens per m <sup>2</sup>	3.3m at 75mm headlap
Batten size - up to 450 mm rafter centres	38 x 25mm
Batten size - up to 600 mm rafter centres	50 x 25mm
Nail size/type for tiles	38 x 3.35 mm aluminium ring shank clout head
Nail size/type for metal tile clips	50 x 3.35mm aluminium ring Shank clout head



Click to see more available colours



**BIM Objects  
Download**



Unless otherwise stated, data is based on the tiles laid at minimum headlap. Before deciding on the batten gauge and linear coverage, the roof tiler should inspect each batch of tiles to ensure that the correct minimum headlap and sidelap are achieved.

**Tile Fixing** - Sandtoft roof tiles must be laid and fixed to comply with BS 5534: the British Standard Code of practice for slating and tiling, and BS 8000: Part 6: the British Standard Code of practice for workmanship on building sites. To ensure compliance with these Standards we strongly recommend that a calculated fixing specification be obtained from Sandtoft Technical Support or using Sandtoft's online tool at [www.all4roof.co.uk](http://www.all4roof.co.uk)

Product specification is subject to change and will be updated accordingly. Date of this data sheet publication; 29/09/2022