



PROJECT NAME

KINGSDOWN HOUSE

THE KING'S SCHOOL,
CANTERBURY

PRODUCT TYPE

SANDTOFT ALBAN SUSSEX BLEND

ARCHITECTS

WALTERS & COHEN





View of the school from the street.



INTRODUCTION

A TIGHT SCHEDULE AND CLOSE SCRUTINY TO CONSERVATION CHARACTERISE THIS ROOF AND WALL PROJECT FOR KINGSDOWN HOUSE, A NEW BOARDING ACCOMODATION AT THE KING'S SCHOOL, CANTERBURY. THE ARCHITECTS FACED A COMPLEX BRIEF ON A SITE SCRUTINISED BY PLANNERS, CONSERVATION TEAMS AND HISTORIC ENGLAND, DUE TO ITS PROXIMITY TO A WORLD HERITAGE SITE.

They needed to carefully consider the kind of products to use on the project, which is when building materials manufacturer Wienerberger was introduced and the Sandtoft Alban Sussex Blend tile was chosen as the versatile material for its roof and walls.



View inside the school walls.



THE CHALLENGE

THE KING'S SCHOOL SITE ABUTS THE HISTORIC CITY WALL IN CANTERBURY, WHICH IS A SCHEDULED ANCIENT MONUMENT AND IS IN CLOSE PROXIMITY TO CANTERBURY CATHEDRAL, A WORLD HERITAGE SITE. THEREFORE, ANY PROPOSED NEW BUILDINGS ARE CLOSELY EVALUATED AND MUST SATISFY A DETAILED SPECIFICATION OF REQUIREMENTS.

The build also needed to be completed to suit the school's academic timetable, and logistical complexities meant a tight delivery schedule needed to be devised and strictly adhered to.

Walters & Cohen drew inspiration from local architecture and construction techniques, interpreting these with contemporary detailing and working with Wienerberger to ensure the roof tiles reflected the elegance and quality of the neighbouring buildings.



The build in progress.





View from the glass walkway.





External view of the project.



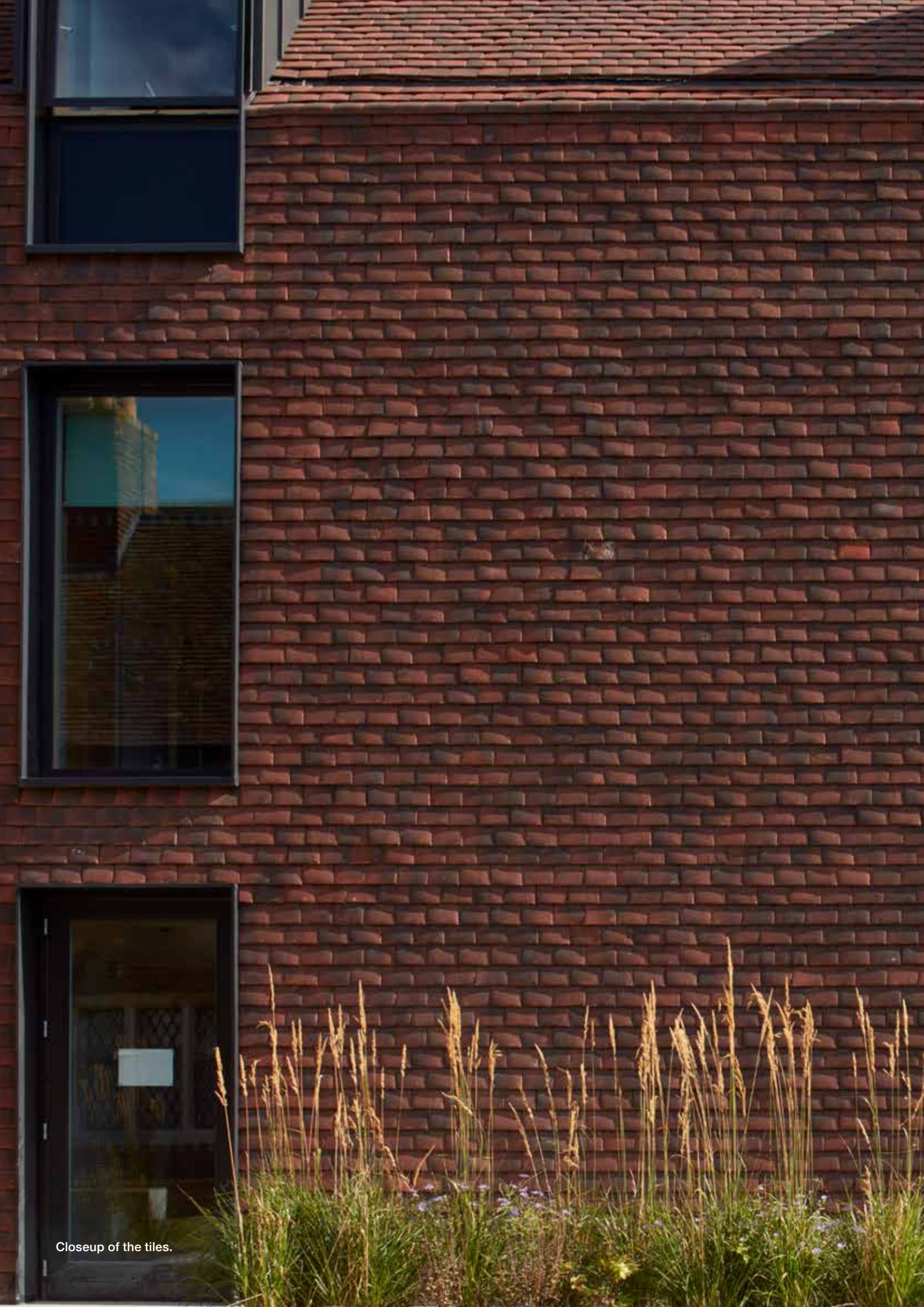
THE SOLUTION

RATHER THAN USING MODERN INTERLOCKING TILES, THE NEW BUILDING IS CLAD IN WIENERBERGER'S ALBAN SUSSEX BLEND TILES, A VERSATILE CHOICE FOR BOTH AESTHETIC AND PRACTICAL REASONS.

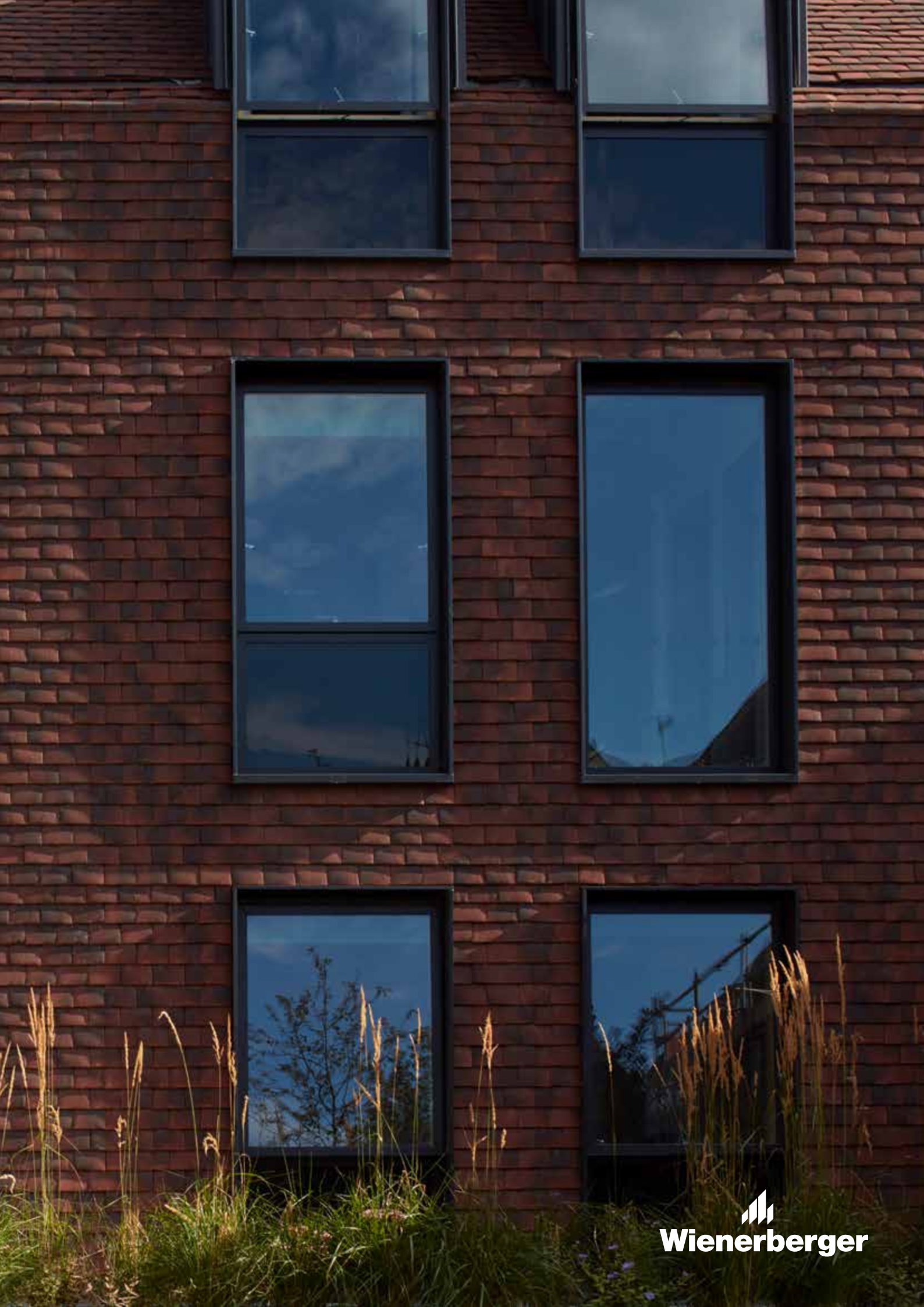
The tiles were chosen because they enabled the architects to use a single material for the roof and walls. The result is a simple, attractive façade that complements the local architecture and construction techniques. It's a simple look that conceals the complex detailing required for the project.

To further assist with the detailed specification, Wienerberger's Alban Sussex Blend bespoke Mansard and Gutter tiles were specially hand made for use at the eaves junction with the wall.

The tiles to be used under the windows were again cut with precision and fixed using a dedicated Wienerberger adhesive. On the apex, rather than using the traditional Winchester cut, the architect required a neat straight line to achieve the desired composition and give a contemporary look.



Closeup of the tiles.



External shot of the project.





TESTIMONIALS

“The project needed to suit the school’s academic timetable, therefore exceptionally careful project management was essential. We completed the project on time and within budget, and are delighted with how the finished building looks.”

Rob Hill, Associate Director of Walters & Cohen Architects









CREDITS

Project	New Boarding Accommodation
Site Address	The Precincts, Canterbury
Architect	Walters & Cohen
Client/Customer	The King's School, Canterbury
Product	Alban Sussex Blend Tiles
Wienerberger Project Manager	Nigel Dyer MloR, Heritage Service Manager

Wienerberger Ltd

Wienerberger House
Brooks Drive
Cheadle Royal Business Park
Cheadle, Cheshire
SK8 3SA

☎ T: 0161 491 8200

✉ ukmarketingcommunications@wienerberger.com

🐦 [@wienerbergeruk](https://twitter.com/wienerbergeruk)

📌 [wienerbergeruk](https://www.pinterest.com/wienerbergeruk)

📷 [wienerbergeruk](https://www.instagram.com/wienerbergeruk)

🌐 www.wienerberger.co.uk

