



# User Guide Wienerberger Corium

Revit 2017



## Loading the material library

These components contain manufacturer specific render materials. Revit will try and find these materials on your computer in the following directory:

C:\LocalRVT\Bimstore\Materials\Wienerberger

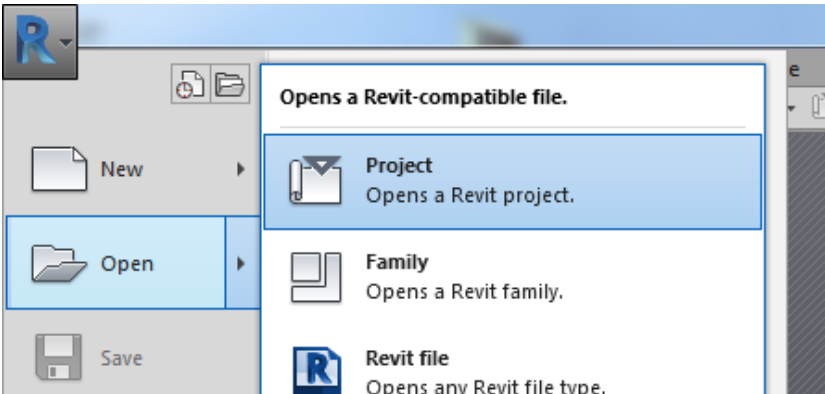
The first time you use these components you will need to copy the images contained in the 'Materials' folder included in the download. Please note: you may need to create the folder structure if you have not used bimstore components with custom materials before.

Once these materials have been copied into the folder structure outlined above Revit will automatically locate this next time you open the project.

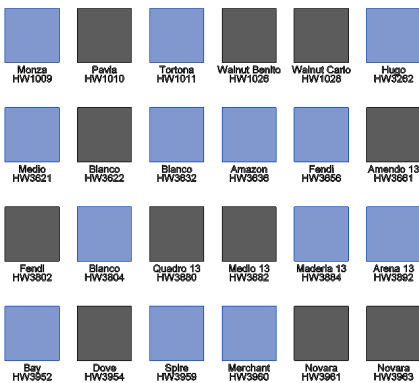
## Loading the flooring components into your project

In Revit, this component is classified as a system family, this means it isn't a component that will be loaded into your project using conventional methods. You can copy the flooring into your project using the following method.

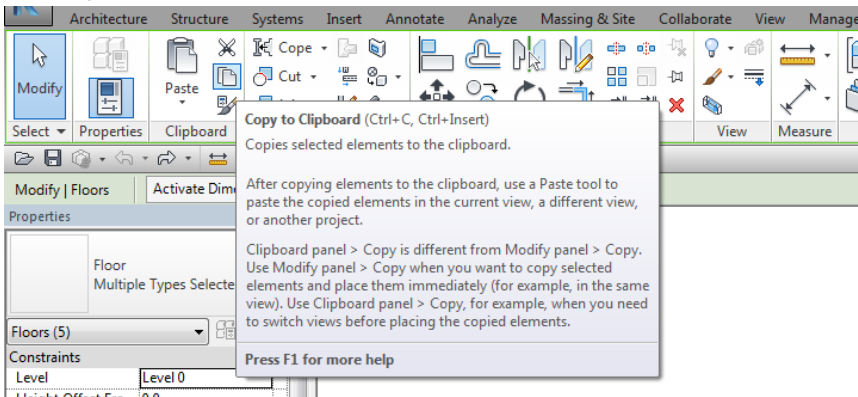
1. Open the Revit file containing your project and navigate to a floor plan view.



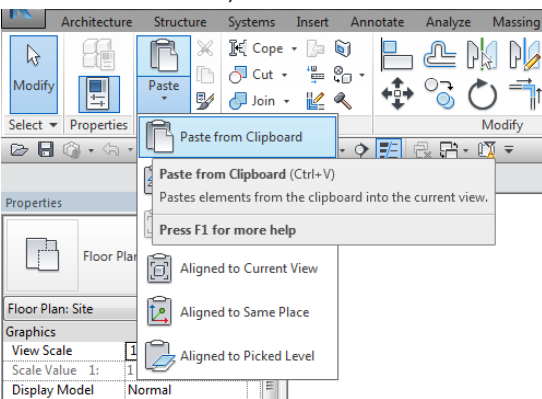
2. Now open the downloaded file from bimstore; the default view that should be open should be a plan view. Select the instances of the flooring you wish to copy (hold Ctrl to select multiple); the flooring components selected should turn blue as below.



3. Copy these components to your clipboard (shortcut Ctrl+C) or clicking the copy button under the modify tab on the Revit ribbon, as shown below.



4. Go to your project (plan view) and paste these into your project (shortcut Ctrl+P) or clicking the paste button under the modify tab on the Revit ribbon, as shown below.



5. The system family is now copied & embedded into your project and can be selected from the system type selector within your project. You can delete the item you pasted and the system families will remain embedded within your project. To remove these from being embedded in your project you can purge the project.

## Attaching the Wienerberger materials to the standard build up

1. Select the 'placeholder' which contains the material you would like to use on the wall build-up.
2. Copy the material name from the 'Material' parameter under the properties box (typically on the left-hand side).
3. Select the wall build up you would like to use and select the 'Edit Type' button under the properties box (typically on the left-hand side).
4. Under the construction tab, edit the 'Structure' (this will show the build-up of the wall).
5. Delete the current material in the wall build-up and paste the copied material.
6. Select OK twice and copy the wall build-up into your project.

Other notes

These components are for design intent only and the data contained within should be treated as such. Please contact the manufacturer for more details and product literature.

You can add this component to your company template file, they will then be available without loading when starting a new project.

Revisions

Version 1.0 – First Issue



Spaceworks  
Benton Park Road  
Newcastle Upon Tyne  
NE7 7LX

+44(0)844 800 6660  
[info@bimstore.co.uk](mailto:info@bimstore.co.uk)  
[www.bimstore.co](http://www.bimstore.co)

© copyright bimstore 2019